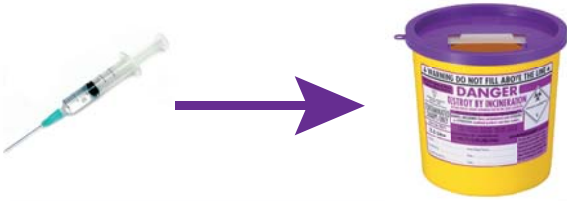


# SHARPSGUARD® Waste Segregation

Your Trust Logo Here

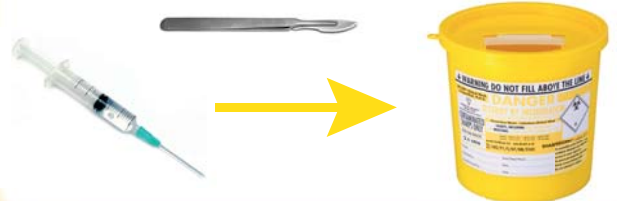
## CYTOTOXIC/CYTOSTATIC SHARPS WASTE

Syringes, needles, cartridges, empty or partially used injection vials/ampoules and other sharp instruments contaminated with Cytotoxic/Cytostatic medicinal waste.



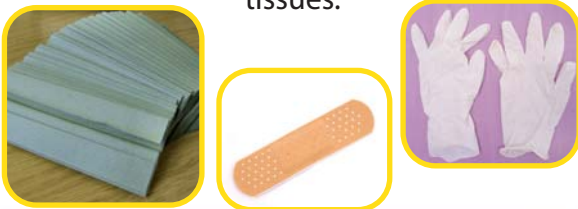
## SHARPS WASTE

Syringes, needles, cartridges, empty or partially used injection vials/ampoules and other sharp instruments with contaminated medicinal waste.



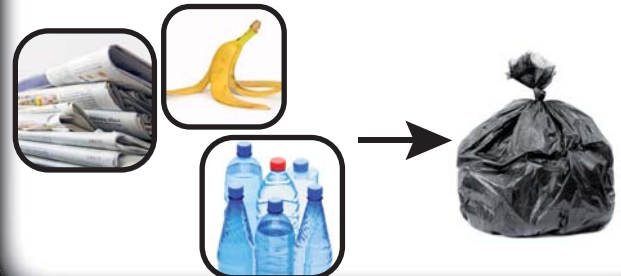
## CLINICAL WASTE

Any human tissue, disposable items and materials that have been used on patients (and may be contaminated with bodily fluids), e.g. dressings, wipes, gloves, aprons and paper tissues.



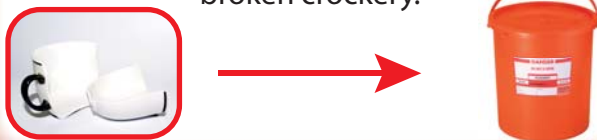
## DOMESTIC HOUSEHOLD WASTE

Items such as used paper towels, newspapers, flowers and clean packaging - similar to the type of waste produced in the home.



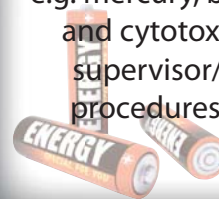
## GLASS & BROKEN CROCKERY WASTE

Empty/washed glass bottles, jars and broken crockery.



## SPECIAL WASTE

e.g. mercury, batteries, chemicals, radioactive and cytotoxic materials. Check with your supervisor/manager to find the correct procedures for disposing of this type of waste



## Example

SHARPSGUARD®